

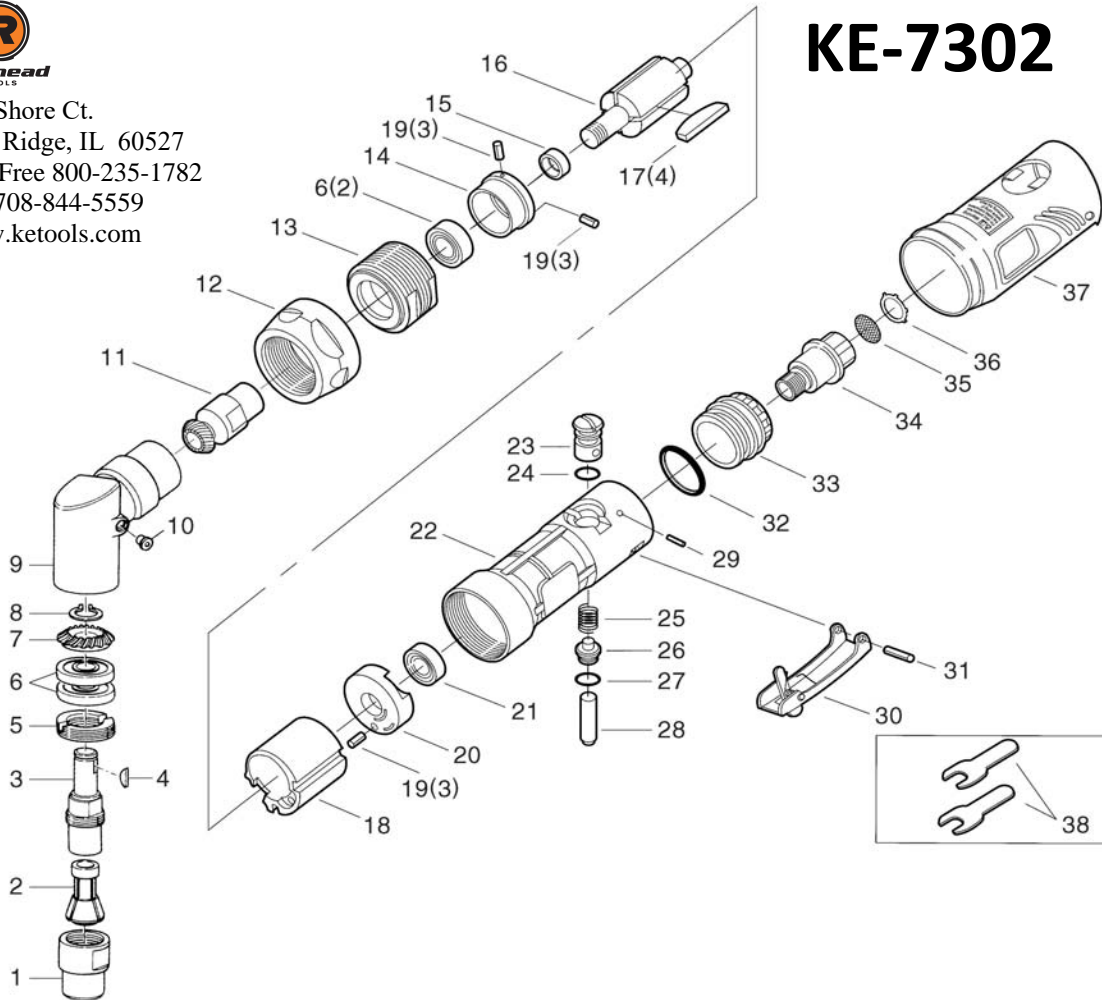
120° ANGLE HEAD DIE GRINDER

EXPLODED VIEW



Railhead
TOOLS
224 Shore Ct.
Burr Ridge, IL 60527
Toll Free 800-235-1782
Fax 708-844-5559
www.ketools.com

KE-7302



Index No.	Parts No.	Description	Qty.Per tool	Index No.	Parts No.	Description	Qty.Per tool
1	7302-01	Collet Nut	1	20	7302-20	Rear End Plate	1
2	7302-02	Collet	1	21	696ZZ	Ball Bearing	1
3	7302-03	Spindle	1	22	7302-22	Motor Housing	1
4	7302-04	Key	1	23	7302-23	Air Regulator	1
5	7302-05	Clamp Nut	1	24	P-10	O-Ring	1
6	608ZZ	Ball Bearing	2	25	7302-25	Valve Spring	1
7	7302-07	Spindle Gear	1	26	7302-26	Throttle Valve	1
8	7302-08	Snap Ring	1	27	P-4	O-Ring	1
9	7302-09	Angle Head Housing	1	28	7302-28	Valve Shaft	1
10	7302-10	Grease Fitting	1	29	SP2.5X20	Spring Pin	1
11	7302-11	Pinion	1	30	7302-30	Safety Lever	1
12	7302-12	Coupling Nut	1	31	SP3X22	Spring Pin	1
13	7302-13	Lock Ring	1	32	7302-32	O-Ring	1
14	7302-14	Front End Plate	1	33	7302-33	Exhaust Sleeve	1
15	7302-15	Bearing Spacer	1	34	7302-34	Inlet Bushing	1
16	7302-16	Rotor	1	35	7302-35	Strainer	1
17	7302-17	Rotor Blade	4	36	7302-36	Snap Ring	1
18	7302-18	Cylinder	1	37	7302-37	Housing Cover	1
19	SP2.5X5	Spring Pin	3	38	7302-38	Spanner Wrench Set	1