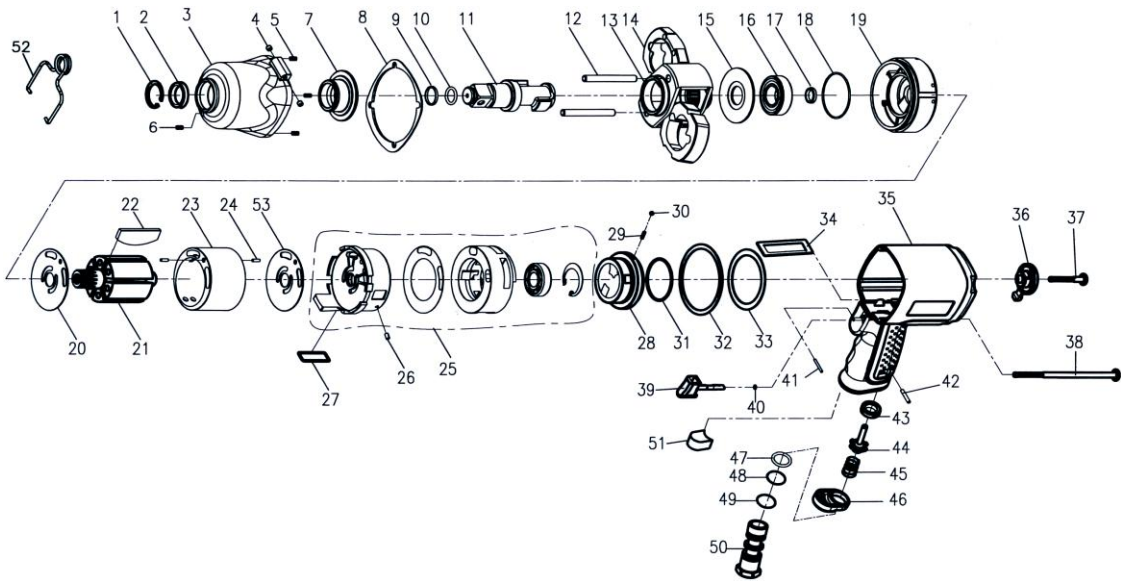




KE-1250EXT 3/4" PROFESSIONAL AIR IMPACT WRENCH



Index No.	Part No.	Description	Qty	Index No.	Part No.	Description	Qty
1	1250-01	Snap Ring	1	26	1250-26	Spring Pin	2
2	1250-02	Oil Seal	1	27	1250-27	Square Ring	1
3	1250-03	Hammer Case	1	28	1250-28	Reverse Valve	1
4	275-03	Bushing	2	29	275-28	Spring	1
5	1250-05	Inserts Recoil	4	30	275-29	Steel Ball	1
6	275-04	Set Screw	1	31	275-17	O-Ring	1
7	1250-07	Anvil Bushing	1	32	1250-32	Rear Gasket	1
8	1250-08	Front Gasket	1	33	1250-33	Washer	1
9	1250-09	Anvil Collar	1	34	1250-34	Air Channel Gasket	1
10	1250-10	O-Ring	1	35	1250-35	Motor Housing	1
11	1250-11	Anvil 3/4" Square	1	36	1250-36	Regulator Knob	1
12	1250-12	Hammer Pin	2	37	1250-37	Cap Screw	1
13	1250-13	Hammer Cage	1	38	1250-38	Screw	4
14	1250-14	Hammer	2	39	1250-39	Trigger	1
15	1250-15	Rear Washer	1	40	275-38	O-Ring	1
16	6004ZZ	Ball Bearing	1	41	1250-41	Spring Pin	1
17	1250-17	Oil Seal	1	42	1250-42	Spring Pin	1
18	1250-18	O-Ring	1	43	275-41	Bushing	1
19	1250-19	Front End Plate	1	44	275-42	Valve Stem	1
20	1250-20	Front End Washer	1	45	1250-45	Spring	1
21	1250-21	Rotor	1	46	1250-46	Exhaust Deflector	1
22	1250-22	Rotor Blade	6	47	P-16	O-Ring	1
23	1250-23	Cylinder	1	48	275-47	O-Ring	1
24	1250-24	Spring Pin	2	49	275-48	O-Ring	1
25	1250-25	Rear End Plate	1	50	1250-50	Air Inlet(3/8" NPT-18)	1
25	Incl.	Valve Sleeve Gasket	1	51	1250-51	Muffler	1
	Incl.	Valve Sleeve	1	52	275-50	Hanger	1
	Incl.	Ball Bearing 6202ZZ	1	53	1250-53	End Plate Washer	1
	Incl.	Snap Ring	1				