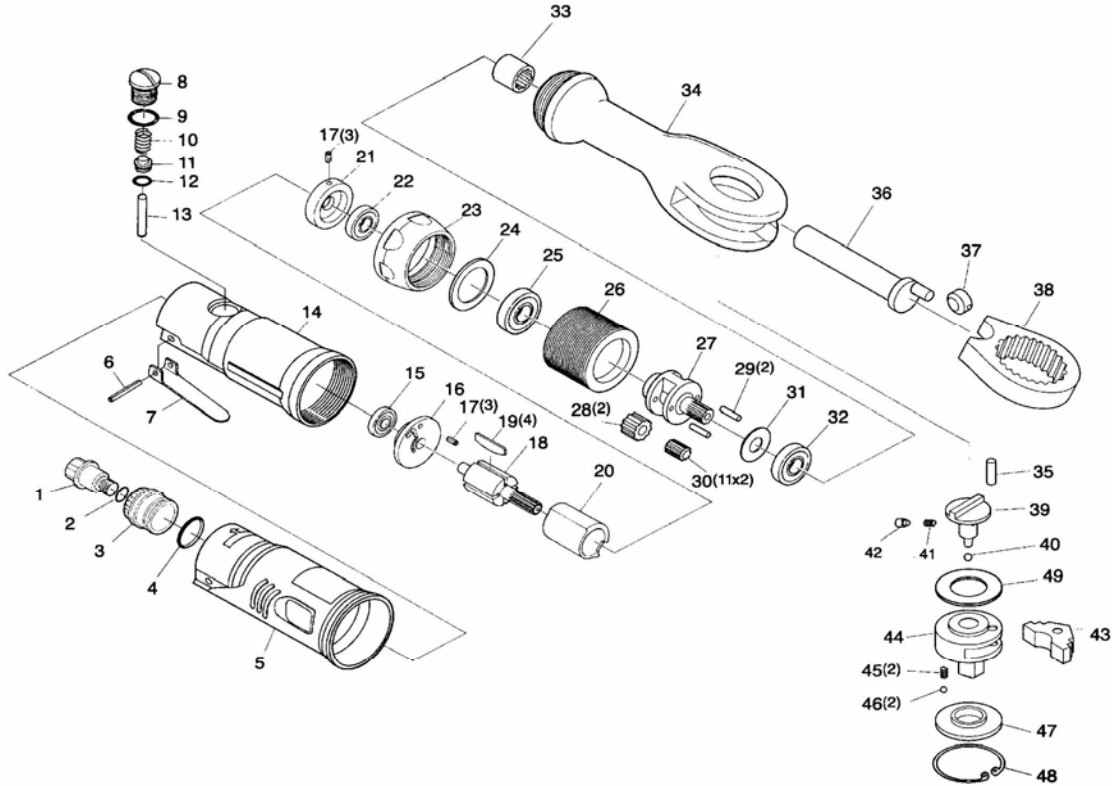


# KE-1130 & KE-1131

## 3/8" & 1/2" SO. DR. RATCHET WRENCH SOFT GRIP



| REF. # | NUMBER  | PART NAME             | QTY | REF. #  | NUMBER  | PART NAME           | QTY  |
|--------|---------|-----------------------|-----|---------|---------|---------------------|------|
| 1      | 1130-01 | SWIVEL INLET BUSHING  | 1   | 27      | 1130-27 | PLANET CAGE         | 1    |
| 2      | P-10    | O RING                | 1   | 28      | 1130-28 | PLANET GEAR         | 2    |
| 3      | 1130-03 | EXHAUST SLEEVE        | 1   | 29      | 1130-29 | PLANET PIN          | 2    |
| 4      | S-22.4  | O RING                | 1   | 30      | 1130-30 | NEEDLE ROLLER       | 11X2 |
| 5      | 1130-05 | HOUSING COVER         | 1   | 31      | 1130-31 | WASHER              | 1    |
| 6      | SP3X28  | SPRING PIN            | 1   | 32      | 608ZZ   | BALL BEARING        | 2    |
| 7      | 1130-07 | THROTTLE LEVER        | 1   | 33      | 1130-33 | NEEDLE BEARING      | 1    |
| 8      | 1130-08 | VALVE SCREW           | 1   | 34      | 1130-34 | RATCHET HOUSING     | 1    |
| 9      | 1130-09 | VALVE SCREW O RING    | 1   | 35      | 1130-35 | DOWEL PIN           | 1    |
| 10     | 1130-10 | THROTTLE VALVE SPRING | 1   | 36      | 1130-36 | CRANK SHAFT         | 2    |
| 11     | 1130-11 | THROTTLE VALVE        | 1   | 37      | 1130-37 | DRIVE BUSHING       | 1    |
| 12     | P-4     | THROTTLE VALVE O RING | 1   | 38      | 1130-38 | YOKE                | 1    |
| 13     | 1130-13 | THROTTLE PLUNGER      | 1   | 39      | 1130-39 | REVERSE BUTTON 3/8" | 4    |
| 14     | 1130-14 | MOTOR HOUSING         | 1   | 1131-39 | 1131-39 | REVERSE BUTTON 1/2" | 1    |
| 15     | 696ZZ   | BALL BEARING          | 1   | 40      | 1130-40 | STEEL BALL          | 1    |
| 16     | 1130-16 | REAR END PLATE        | 1   | 41      | 1130-41 | RATCHET SPRING      | 1    |
| 17     | SP2.5X5 | SPRING PIN            | 3   | 42      | 1130-42 | LOCK PIN            | 1    |
| 18     | 1130-18 | ROTOR                 | 1   | 43      | 1130-43 | RATCHET PAWL        | 1    |
| 19     | 1130-19 | ROTOR BLADE           | 4   | 44      | 1130-44 | ANVIL 3/8"          |      |
| 20     | 1130-20 | CYLINDER              | 1   | 1131-44 | 1131-44 | ANVIL 1/2"          | 1    |
| 21     | 1130-21 | FRONT END PLATE       | 1   | 45      | 1130-45 | SPRING              | 2    |
| 22     | 608ZZ   | BALL BEARING          | 6   | 46      | 1130-46 | STEEL BALL          | 2    |
| 23     | 1130-23 | CLAMP NUT             | 1   | 47      | 1130-47 | THRUST WASHER 3/8"  | 1    |
| 24     | 1130-24 | WASHER                | 1   | 1131-47 | 1131-47 | THRUST WASHER 1/2"  | 1    |
| 25     | 6001ZZ  | BALL BEARING          | 1   | 48      | 1130-48 | RETAINING RING      | 1    |
| 26     | 1130-26 | INTERNAL GEAR         | 1   | 49      | 1130-49 | SPACER              |      |



224 Shore Court, Burr Ridge, IL 60527  
 800-235-1782 Phone 708-844-5500 Fax 708-844-5559

[www.ketools.com](http://www.ketools.com)