



224 Shore Court, Burr Ridge, IL 60527
 Toll Free: (800) 235-1782
 Office: (708) 844-5500
 Fax: (708) 844-5559
www.ketools.com

MODEL W-750HP

3/4" Square Drive Impact Wrench

HEAVY DUTY 1" Bolt Size



Also available in Models:

- W-750HP-2 2" Anvil
- W-750HP-6 6" Anvil

SPECIFICATIONS:

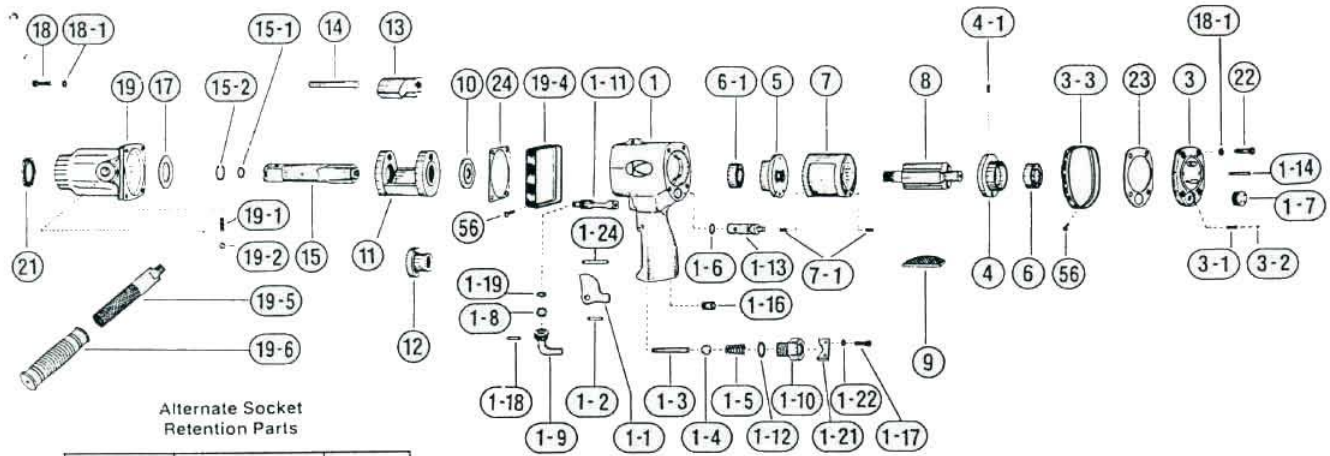
Bolt capacity..... 1"
 Torque.....850 ft. lbs.
 Speed..... 4,200 R.P.M.
 Impacts per minute780
 Weight.....13.4 lbs.
 Length.....9 15/16"
 Hose Size3/8"
 Air consumption.....9.5 C.F.M.
 Air inlet thread size.....3/8" N.P.T.
 Air pressure.....90-120 P.S.I.

OPERATING & MAINTENANCE:

1. Use of filter and lubricator assembly is recommended to insure proper functioning and long life.
2. The grease in the impact mechanism should be changed after every 40 hours of operation.
3. Before starting tool in operation, blow hose out prior to attaching to the tool to prevent dirt and water from entering tool.
4. If a bolt or nut can not be loosened or tightened to proper torque after five seconds of impacting, a larger size wrench is needed for the job. This is an indication of:
 - a. Low air pressure or volume.
 - b. Improper application of wrench.
 - c. Worn out socket.
5. Do not use sockets that are too large for the capacity of the tool. This will wear or break the square drive spindle prematurely.
6. Check rotor blades for wear in the event the tool is gradually losing power and all other operating conditions are proper.

IMPORTANT:
OIL DAILY. FIRST IN THE MORNING AND JUST BEFORE END OF DAY. USE A GOOD GRADE SPINDLE OIL OR SPECIAL AIR MOTOR OIL.

Impact Wrenches



Alternate Socket Retention Parts

Part Number	Part Name	List Price
24600	Spring	
24601	Retaining Pin	
24602	Roll Pin	

Exploded View

Parts Price List Models W750HP • 750HP-2 • 750HP-6 Type-1

Ref. No. on Draw.	Part Number	Part Name	Quantity Required per Tool	List Price	Ref. No. on Draw.	Part Number	Part Name	Quantity Required per Tool	List Price
1	20401A	Motor Casing	1		6-1	6204Z	Front Bearing	1	
1-1	32305	Trigger	1		7	20304	Cylinder	1	
1-2	SP3 x 16	Trigger Pin	1		7-1	SP4 x 10	Pin	2	
1-3	20313	Throttle Valve Pin	1		8	20605	Rotor	1	
1-4	1/2" d	Throttle Valve Ball	1		9	20306	Rotor Blade	5	
1-5	S12 x 26 x 0.8	Throttle Valve Spring	1		10	20609	Spacer	1	
1-6	P-10	O Ring	1		11	20610	Impact Cage	1	
1-7	20210	Regulator Knob	1		12	20627	Cam	1	
1-8	IRTW-15	Retainer Ring	1		13	20628	Hammer	1	
1-9	14116	Reverse Lever	1		14	20629	Hammer Pin	1	
1-10	A-40	Inlet Bushing	1		15	20630	Sq. Dr. Anvil	1	
1-11	20415	Reverse Valve	1			20630-2	Sq. Dr. Anvil 2" Ex.	1	
1-12	P-18	O Ring	1			20630-6	Sq. Dr. Anvil 6" Ex.	1	
1-13	20417	Regulating Valve	1		15-1	P-14	O Ring	1	
1-14	SP3 x 16	Pin	1		15-2	20128	Retainer Ring	1	
1-16	PT 1/4"	Oil Screw	1		17	20126	Thrust Plate	1	
1-17	M4 x 8	Screw	2		18	M6 x 20	Front End Bolt	4	
1-18	SP3 x 16	Pin	1		18-1	M6W	Spring Washer	8	
1-19	P-10	O Ring	1		19	20602	Impact Housing	1	
1-21	32309	Lock	1		19-1	S3.8 x 10 x 0.5	Spring	1	
1-22	M4W	Spring Washer	2		19-2	4D	Steel Ball	1	
1-24	SP3 x 28	Pin	1		19-4	20404	Fr. Rubber Prot.	1	
3	20403A	Backhead Cover	1		19-5	B-12.7	Dead Handle	1	
3-1	S3.8 x 10 x 0.5	Knock Spring	1		19-6	56-27	Handle Cover	1	
3-2	4D	Steel Ball	1		21	V38255	Oil Seal	1	
3-3	20405	Rear Rub. Prot.	1		22	M6 x 20	Backhead Bolt	4	
4	20302	Rear Bear. Plate	1		23	20416	Motor House Gasket	1	
4-1	SP4 x 10	Pin	1		24	20407	Housing Gasket	1	
5	20303	Front Bear. Plate	1		56	M4 x 12ST	Tapping Screw	2	
6	6203	Rear Bearing	1			20630D	Detent Anvil	Opt.	