

Locomotive Digital Video Recorder



RVS-LDVR4K®

Ultra High-Definition Locomotive Digital Video Recorder

Railhead's **LDVR4K** is the most technologically advanced, user-friendly solution for video surveillance. Offering the lowest total cost of ownership, LDVR4K capabilities increase safety, improve operational efficiency, and mitigate risk, saving millions of dollars per year. These are just a few reasons why Railhead LDVRs have been chosen by more freight and commuter railroads than any other.



Railhead Exclusives:



Longest recording time of any LDVR on the market



Highest frame rate with more audio and video channels than competitors



Dual solid-state drives for redundancy or extended recording times



Simultaneous high resolution and long-term recording



Front panel diagnostics with individual LED indicators for Camera, Drive, GPS, and CHMM systems



Railhead
SYSTEMS

Railhead Corp.
224 Shore Court, Burr Ridge, IL 60527
800-235-1782 708-844-5500
www.railheadcorp.com

Locomotive Digital Video Recorder

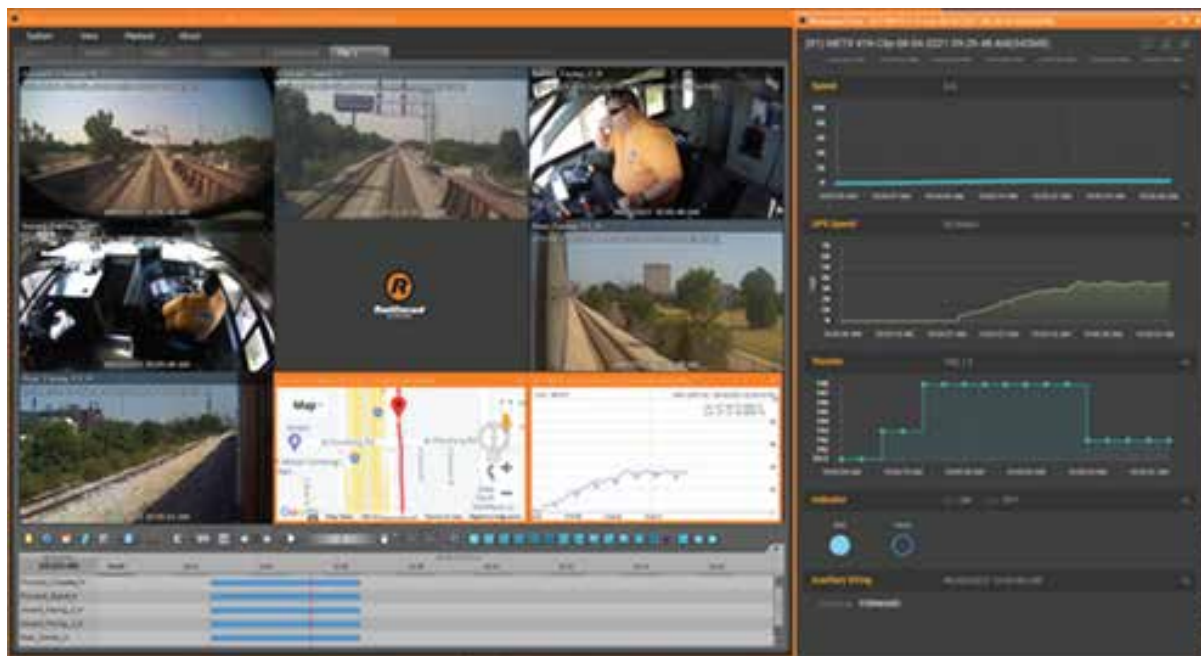


RVS-LDVR4K®

Features and Capabilities:

- Faster downloads, lower cellular bills, and flawless streaming with state-of-the-art H.265 compression.
- Designed for the rail market, meets AAR S9401, EN50155, NDAA 889 and Transport Canada SOR/2020-178.
- Modular, scalable and completely forward and backward compatible, eliminating obsolescence risk.
- Plug-and-play device recognition minimizes installation time and lowers maintenance costs.
- License-free Railhead System Management (RSM) software allows for live video and video playback.

Video is displayed from multiple cameras with on-board signal data along a timeline map.



LDVR4K® is a registered trademark of Railhead Corporation



Railhead
SYSTEMS

Railhead Corp.
224 Shore Court, Burr Ridge, IL 60527
800-235-1782 708-844-5500
www.railheadcorp.com

Locomotive Digital Video Recorder



RVS-LDVR4K®

Specifications:

RVS-LDVR4K®

Connections	Ethernet	Twelve (12) PoE ports for cameras and/or data/video accessories and devices LAN expansion port for a total of sixteen (16) devices WAN port for download and/or wireless remote access
	Audio	Two (2) designated analog audio channels Sixteen (16) audio channels via supported cameras
	Video Out	Available via Railhead decoder
Performance	Resolution	Up to 4K ultra high-definition recording up to 3840 x 2160
	Streams	Multiple streams from camera: High Quality (HQ), Long Term (LT), and Remote High Quality: 480ips @ 4K with H.265 Long Term: 480ips @ N-HD with H.265
	Cybersecurity	Video stored with 128-bit chain fingerprint encryption ensures authenticity
	Compression	H.264, H.265, M-JPEG, Railhead's Advanced Compression Technology (RACT)
Storage	General	Adjustable recording slider to allocate space for HQ and LT Streams configurable to be stored to CHMM or internal storage modules
	Internal	Locking drive bay that accepts 2 removable Storage Memory Modules RAID 1 mirroring capability increases data security and redundancy Total internal storage up to 8TB (1TB, 2TB, 4TB capacities available)
	CHMM	Supports direct connection to Railhead CHMM Total CHMM storage up to 1TB (128GB, 256GB, 512GB, 1TB capacities available)
System Specs	Power	Nominal input voltages: 24VDC, 36VDC, 48VDC, 72VDC, 110VDC Power hold up: Safe shutdown protection after power loss protects video integrity utilizes Railhead standard 5-pin power connector
	Sensors	Equipped standard with built-in GPS and a 3-axis accelerometer
	Standards	AAR S-9401 (formerly S-5702), NDAA 889, EN50155
	Compliance	MCU 5 - LSI Rack mountable
	Temperature	-40°C to 70°C
	Physical	Powder-coated steel construction is sealed and water-resistant Weight: 15.4 lbs / 7.0 kg Dimensions: 9.3" H x 6.2" W x 13.1" D (236mm H x 157mm W x 333mm D)



Railhead
SYSTEMS

Railhead Corp.
224 Shore Court, Burr Ridge, IL 60527
800-235-1782 708-844-5500
www.railheadcorp.com