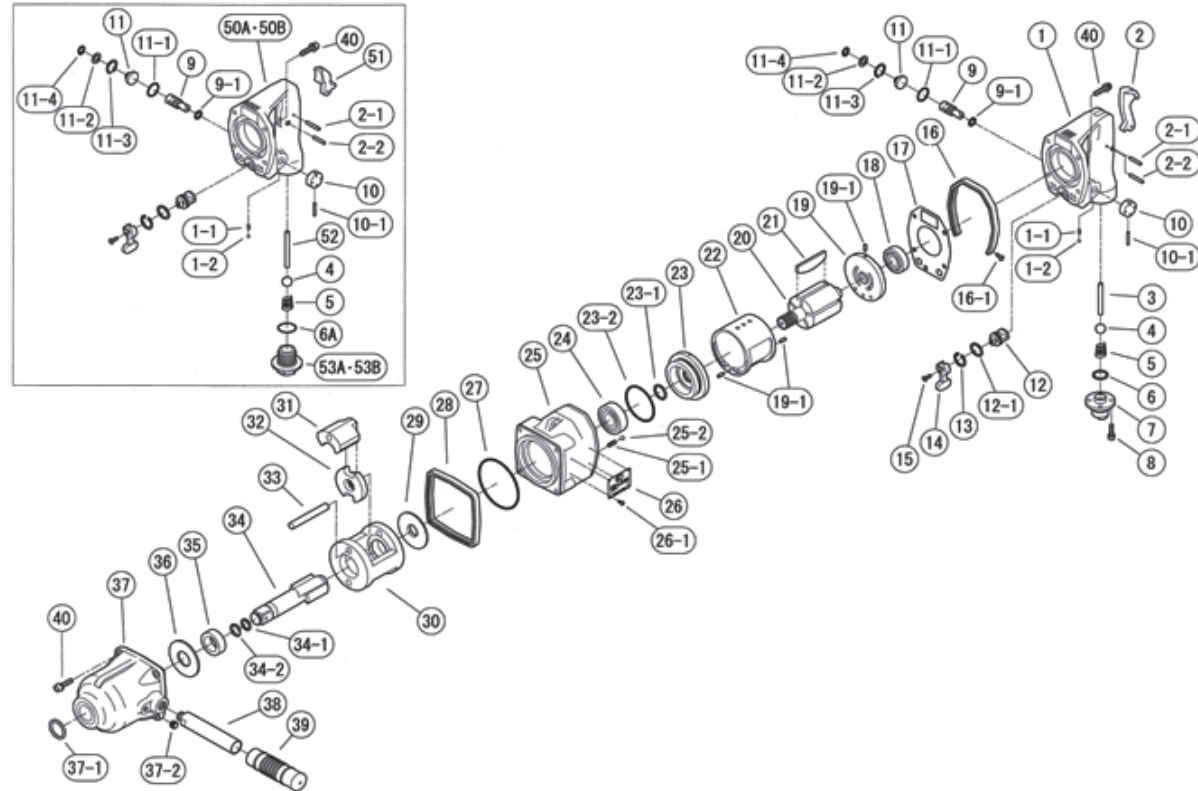


KW-L20G

EXPLODED VIEW



REF.NO.	PART NO.	PART NAME	Q'TY	REF.NO.	PART NO.	PART NAME	Q'TY
1	0538180	HANDLE C.P.	1	22	20304	CYLINDER	1
0	0538180N	HANDLE C.P. OUTSIDE (NPT)	1	23	0222023A	FRONT END PLATE	1
1-1	S3.8X8X.05	KNOCK SPRING	1	23-1	P-20	O-RING	1
1-2	4D	STEEL BALL	1	23-2	S-56	O-RING	1
2	0222117	THROTTLE LEVER	1	24	6203ZZ	BALL BEARING	1
2-1	SP4X22	PIN	1	25	0920181	MOTOR CASE C.P.	1
2-2	SP4X24	PIN	1	25-1	0132991	KNOCK SPRING	1
3	0538111	THROTTLE VALVE PIN	1	25-2	6D	STEEL BALL	1
4	9/16D	THROTTLE VALVE	1	26	0920195	NAME PLATE	1
5	0222190	THROTTLE VALVE SPRING	1	26-1	Z0850X3	RIVET	4
6	P-18	O-RING	1	27	S-80	O-RING	1
7	0538111B	INLET BUSHING	1	28	0538170	FRONT RUBBER PROTECTOR	1
0	0538111BN	INLET BUSHING (NPT)	0	29	0222025A	SPACER	1
8	M5X16	BOLT	4	30	0920126	IMPACT CAGE	1
9	0538117	REGULATING VALVE	1	31	0920128	HAMMER	2
9-1	P-10A	O-RING	1	32	0920127	CAM	1
10	0442314	REGULATING VALVE KNOB	1	33	0920129	HAMMER PIN	2
10-1	SP3X22	PIN	1	34	09201843	SQ. DR. ANVIL C.P.	1
11	0222150	REGULATING CAP	1	34-1	P-14	O-RING	1
11-1	S-20	O-RING	1	34-2	20128	RETAINER RING	1
11-2	02221501	REGULATING CAP LOCK	1	35	0920131	CAGE BUSH	1
11-3	IRTW-20	RETAINER RING	1	36	0222034	THRUST PLATE	1
11-4	STW-10	RETAINER RING	1	37	0920182	IMPACT HOUSING C.P.	1
12	0132916	REVERSING VALVE	1	37-1	P-25	O-RING	1
12-1	S-18	O-RING	1	39	56-27	GRIP	1
13	RTW-21	RETAINER RING	1	40	M6X25	BOLT	8
14	0132915	REVERSING LEVER	1	Parts for Inside Trigger Handle			
15	M4X12	SCREW	1	50A	0538180ISF	HANDLE C.P.(PT)	1
16	0538171	REAR RUBBER PROTECTOR	1	50B	0538180NISF	HANDLE C.P.(NPT)	1
16-1	M4X12ST	SCREW	2	51	0345417	THROTTLE LEVER	1
17	0538106	MOTOR HOUSING GASKET	1	52	0222111I	THROTTLE VALVE PIN	1
18	6204ZZ	BALL BEARING	1	53A	0538119I	INLET BUSHING (PT)	1
19	0120302	REAR END PLATE	1	53B	0538119IN	INLET BUSHING (NPT)	1
19-1	SP4X10	PIN	3	6A	P-28J	O-RING	1
20	20605	ROTOR	1				
21	0538022	ROTOR BLADE	5				



K&E TOOLS division of Railhead Corporation
 224 Shore Court, Burr Ridge, IL 60527
 800-235-1782 Phone 708-844-5500 Fax 708-844-5559
 www.ketools.com