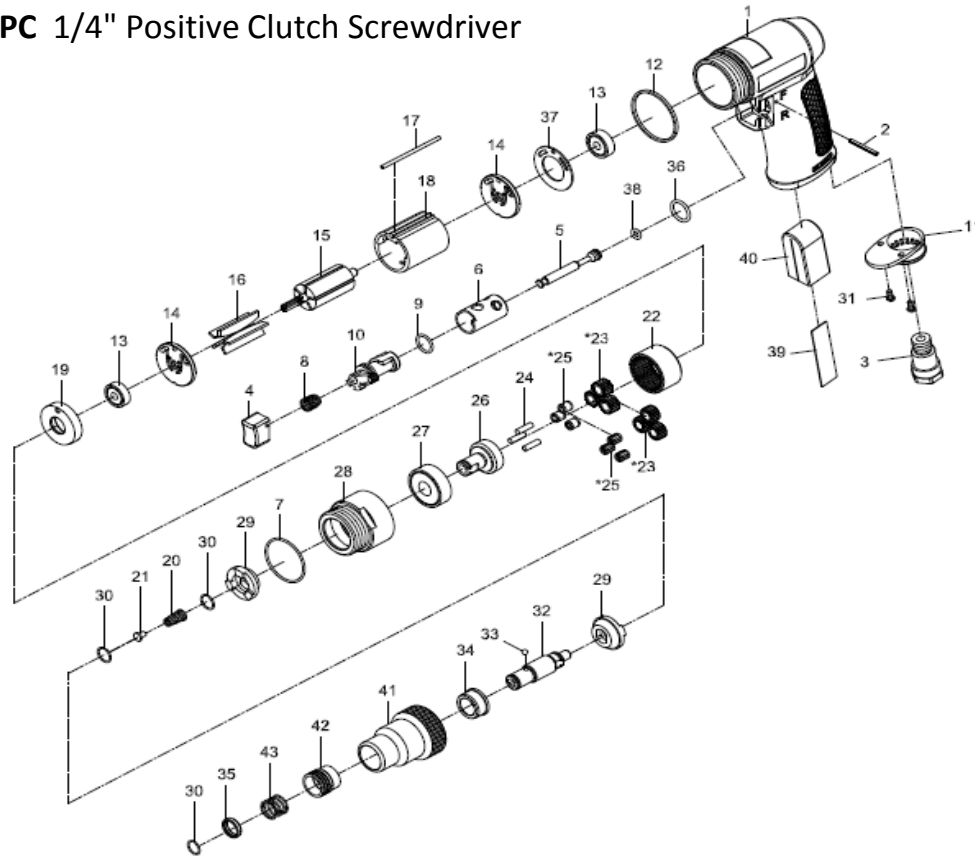


# KE-8475 PC 1/4" Positive Clutch Screwdriver



| REF. # | NUMBER  | PART NAME        | QTY | REF. # | NUMBER     | PART NAME           | QTY |
|--------|---------|------------------|-----|--------|------------|---------------------|-----|
| 1      | 8475-01 | Motor Housing    | 1   | 23     | 8475-23    | Planet Gear         | 3   |
| 2      | 8475-02 | Spring Pin       | 1   | 24     | 8475-24    | Pin                 | 3   |
| 3      | 8475-03 | Air Inlet        | 1   | 25     | 8475-25    | Bushing             | 3   |
| 4      | 8475-04 | Trigger          | 1   | 26     | 8475-26    | Work Spindle        | 1   |
| 5      | 8475-05 | Valve Stem       | 1   | 27     | 6201zz     | Ball Bearing        | 1   |
| 6      | 8475-06 | Reverse Bushing  | 1   | 28     | 8475-28    | Clamp Nut           | 1   |
| 7      | 8475-07 | O Ring           | 1   | 29     | 8475-29    | Clutch              | 2   |
| 8      | 8475-08 | Valve Spring     | 1   | 30     | 8475-30    | Retaining Ring      | 3   |
| 9      | 8475-09 | O Ring           | 1   | 31     | 8475-31    | Screw               | 2   |
| 10     | 8475-10 | Reverse Lever    | 1   | 32     | 8475-32    | Cam Spindle         | 1   |
| 11     | 8475-11 | Exhaust diffuser | 1   | 33     | 1/8D       | Steel Ball          | 1   |
| 12     | 8475-12 | Decoration Ring  | 1   | 34     | 8475-34    | Bushing             | 1   |
| 13     | 626ZZ   | Ball Bearing     | 1   | 35     | 8475-35    | Washer              | 1   |
| 14     | 8475-14 | End Plate        | 1   | 36     | 8475-36    | O Ring              | 1   |
| 15     | 8475-15 | Rotor            | 1   | 37     | 8475-37    | Motor Gasket        | 1   |
| 16     | 8475-16 | Rotor Blade      | 5   | 38     | 8475-38    | O Ring              | 1   |
| 17     | 8475-17 | Pin              | 1   | 39     | 8475-39    | Iron Sheet          | 1   |
| 18     | 8475-18 | Cylinder         | 1   | 40     | 8475-40    | Damping Material    | 1   |
| 19     | 8475-19 | Spacer           | 1   | 41     | 8475-41    | Clutch Housing      | 1   |
| 20     | 8475-20 | Spring           | 1   | 42     | 8475-42    | Ball Retainer       | 1   |
| 21     | 8475-21 | Spring Guide     | 1   | 43     | 8475-43    | Spring              | 1   |
| 22     | 8475-22 | Internal Gear    | 1   |        |            |                     |     |
|        |         |                  |     |        |            |                     |     |
|        |         |                  |     |        | 8475-100WP | Wear Parts kit      | 1   |
|        |         |                  |     |        | 8475-99CA  | Clutch Assembly kit | 1   |
|        |         |                  |     |        | 8475-TK    | Trigger kit         | 1   |

Railhead Corporation  
 224 Shore Court  
 Burr Ridge, IL 60527  
 800-235-1782 Fax 708-844-5559