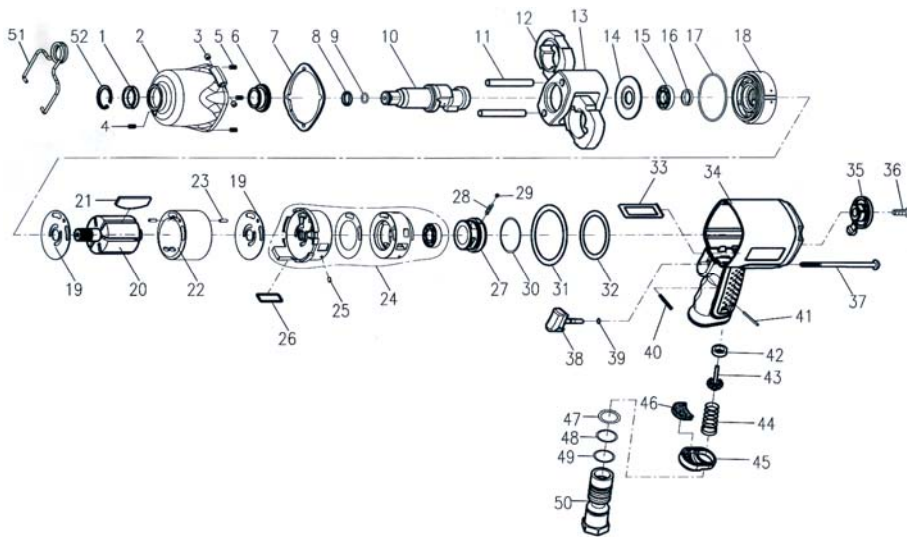




KE-675EXT 1/2" PROFESSIONAL AIR IMPACT WRENCH



Index No.	Part No.	Description	Q'ty	Index No.	Part No.	Description	Q'ty
1	675-01	Oil Seal	1	25	675-25	Spring Pin	2
2	675-02	Hammer Case	1	26	675-26	Square Ring	1
3	275-03	Bushing	2	27	675-27	Regulator	1
4	275-04	Set Screw	1	28	675-28	Spring	1
5	275-05	Inserts Recoil	4	29	275-29	Steel Ball	1
6	675-06	Anvil Bushing	1	30	675-30	O-Ring	1
7	675-07	Front Gasket	1	31	675-31	Rear Gasket	1
8	675-08	Anvil Collar	1	32	675-32	Washer	1
9	P-7	O-Ring	1	33	675-33	Air Channel Gasket	1
10	675-10	Anvil 1/2" Square	1	34	675-34	Motor Housing	1
	675-10P	Anvil 1/2" Pin	1	35	675-35	Regulator Knob	1
11	675-11	Hammer Pin	2	36	675-36	Cap Screw	1
12	675-12	Hammer	2	37	675-37	Screw	4
13	675-13	Hammer Cage	1	38	275-37	Trigger	1
14	675-14	Rear Washer	1	39	275-38	O-Ring	1
15	R-8	Ball Bearing	1	40	675-40	Spring Pin	1
16	675-16	Oil Seal	1	41	275-40	Spring Pin	1
17	S-50	O-Ring	1	42	275-41	Bushing	1
18	675-18	Front End Plate	1	43	275-42	Valve Stem	1
19	675-19	End Plate Washer	2	44	675-44	Spring	1
20	675-20	Rotor	1	45	275-44	Exhaust Deflector	1
21	675-21	Rotor Blade	6	46	275-45	Muffler	1
22	675-22	Cylinder	1	47	P-16	O-Ring	1
23	275-23	Spring Pin	2	48	275-47	O-Ring	1
24	675-24	Rear End Plate	1	49	275-48	O-Ring	1
	Incl.	Valve Sleeve Gasket	1	50	275-49	Air Inlet (1/4" NPT)	1
	Incl.	Valve Sleeve	1	51	275-50	Hanger	1
	Incl.	Ball Bearing 6001ZZ	1	52	675-52	Snap Ring	1