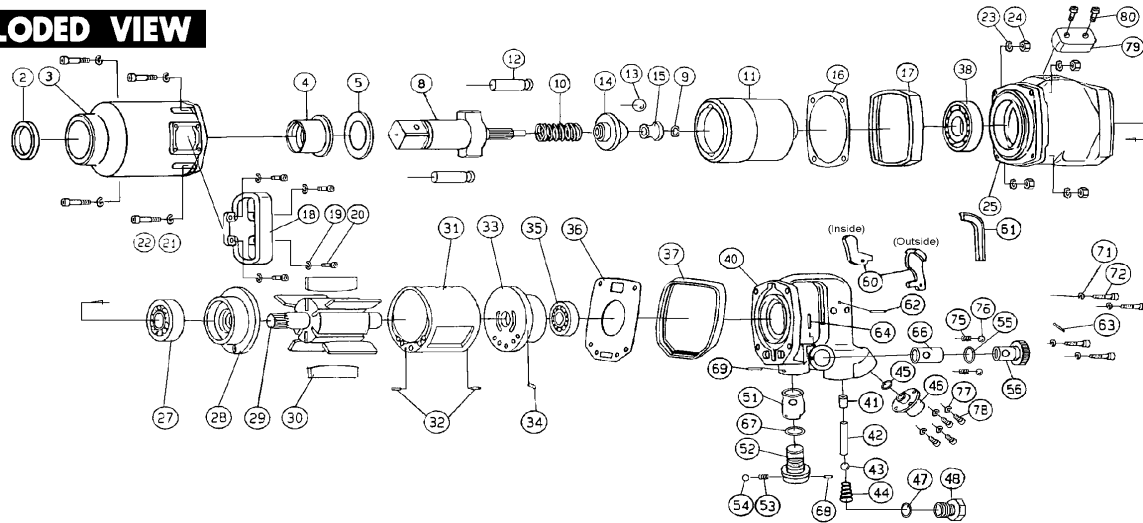


EXPLODED VIEW



PARTS LIST

9/1/2008

PARTS No.	NAME OF PARTS	PER SET	PARTS CODE	PARTS No.	NAME OF PARTS	PER SET	PARTS CODE
2	Oil Seal	1	050656VB	38	Ball Bearing	1	06010000
3A	Hammer Case Assembly (No. 2~No. 4)		2550511	40A	Outside Lever Frame Handle Assembly (No. 40~60, 62~69, 75~78)		140053
3	Hammer Case	1	25505370	40A	Inside Lever Frame Handle Assembly (No. 40~69, 75~78)		140063
4	Hammer Case Bushing	1	25515420	40	Frame Handle	1	10325D41
5	Thrust Washer	1	25505510	41	Throttle Bushing	1	10325422
8	Anvil	1	25515A20	42	Throttle Pin	1	10325280
9	Stop Ring	1	25515220	43	Throttle Valve	1	008050GB
10	Cam Spring	1	25505230	44	Throttle Spring	1	10325232
11	Hammer Cage	1	25515C80	45	O-Ring	1	001600PR
12	Hammer Pin	2	25505C90	46	Inlet Bushing NPT	1	10325427
13	Steel Ball	1	016110SB	47	O-Ring	1	002100PR
14	Cam(Driver)	1	25515080	48	Throttle Plug	1	10325D30
15	Ball Guide	1	25515D80	51	Valve Bushing	1	10325421
16	Hammer Case Packing	1	20455350	52A	Reverse Valve Assy (No. 52, 68)		1032533
17	Front Protect Rubber	1	20455D50	52	Reverse Valve	1	10325E11
18	D-Handle	1	10325C10	53	Spring	1	20191230
19	Spring Washer (for D-Handle)	4	006000SW	54	Steel Ball	1	00400USB
20	Hex. Cap Bolt (for D-Handle)	4	006180CB	55	O-Ring	1	001500PR
21	Spring Washer	4	008000SW	56	Adjust Valve	1	10325011
22	Hex. Cap Bolt	4	008450CB	60	Outside Lever	1	10325180
23	Spring Washer	4	008000SW	60	Inside Lever	1	23215180
24	Hex. Nut	4	00800HNN	61	Rubber (for Inside Lever)	1	23215A90
25CP	Motor Case CP (No. 25A~35, 38, 79, 80)		255152	62	Spring Pin	1	040280SP
25A	Motor Case Assembly	1	24515460 008100DN	63	Needle Pin	1	040218NK
27	Ball Bearing	1	06206Z00	64	Spring Pin	1	040320SP
28	Front End Plate	1	25515040	66	Adjust Bushing	1	10325426
29	Rotor	1	25515490	67	O-Ring	1	001600PR
30	Vane	6	20455500	68	Spring Pin	1	03008USP
31A	Cylinder Assembly (No. 31, No. 32)		1045523	69	Spring Pin	1	040320SP
31	Cylinder	1	20455190	71	Spring Washer	4	008000SW
32	Spring Pin	2	040200SP	72	Hex. Cap Bolt	4	008250CB
33A	Rear End Plate Assembly (No. 33, No. 34)		2400522	75	Spring	2	10325231
33	Rear End Plate	1	24005050	76	Steel Ball	2	00400USB
34	Spring Pin	1	040080SP	77	Spring Washer	4	005000SW
35	Ball Bearing	1	06205000	78	Hex. Cap Bolt	4	005150CB
36	Motor Case Packing	1	20455351	79	Exhaust Rubber	1	20505020
37	Rear Protect Rubber	1	20455D51	80	Hex. Cap Bolt	2	003120CB