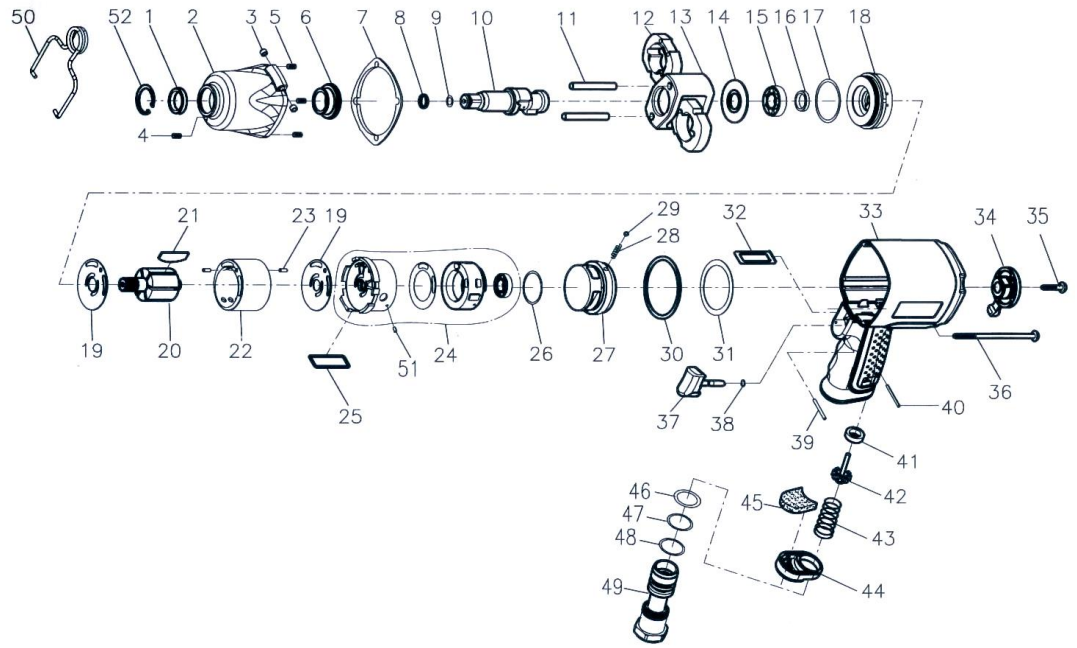




# KE-275EXT

## 3/8" PROFESSIONAL AIR IMPACT WRENCH



Index No.	Part No.	Description	Q'ty	Index No.	Part No.	Description	Q'ty
1	275-01	Oil Seal	1	25	275-25	Square Ring	1
2	275-02	Hammer Case	1	26	275-26	O-Ring	1
3	275-03	Bushing	2	27	275-27	Regulator	1
4	275-04	Set Screw	1	28	275-28	Spring	1
5	275-05	Inserts Recoil	4	29	275-29	Steel Ball	1
6	275-06	Anvil Bushing	1	30	275-30	Rear Gasket	1
7	275-07	Front Gasket	1	31	275-31	Washer	1
8	275-08	Anvil Collar (3/8" Square)	1	32	275-32	Air Channel Gasket	1
9	275-09	O-Ring (3/8" Square)	1	33	275-33	Motor Housing	1
10	275-10	Anvil (3/8" Square)	1	34	275-34	Regulator Knob	1
	275-10P	Anvil (3/8" PIN)	1	35	275-35	Cap Screw	1
11	275-11	Hammer Pin	2	36	275-36	Screw	4
12	275-12	Hammer	2	37	275-37	Trigger	1
13	275-13	Hammer Cage	1	38	275-38	O-Ring	1
14	275-14	Rear Washer	1	39	275-39	Spring Pin	1
15	275-15	Ball Bearing	1	40	275-40	Spring Pin	1
16	275-16	Oil Seal	1	41	275-41	Bushing	1
17	275-17	O-Ring	1	42	275-42	Valve Stem	1
18	275-18	Front End Plate	1	43	275-43	Spring	1
19	275-19	End Plate Washer	2	44	275-44	Exhaust Deflector	1
20	275-20	Rotor	1	45	275-45	Non Woven	1
21	275-21	Rotor Blade	6	46	275-46	O-Ring	1
22	275-22	Cylinder	1	47	275-47	O-Ring	1
23	275-23	Spring Pin	2	48	275-48	O-Ring	1
24	275-24	Rear End Plate	1	49	275-49	Air Inlet (1/4" NPT)	1
	Incl.	Valve Sleeve Gasket	1	50	275-50	Hanger	1
	Incl.	Valve Sleeve	1	51	SP2X6	Spring Pin	1
	Incl.	Ball Bearing	1	52	275-52	Snap Ring	1