

# 360 Degree Camera



## RVS-CAM-3605MP-2M

### 5 MP Vandal-resistant 360 Degree View Network Camera with Infrared (IR)

Railhead's **360-Degree camera** is a railroad and transit agency's force multiplier. Our 5MP, low profile camera vividly captures what previously took up to four individual cameras, while running only one cable. A perfect choice for locomotive cabs, passenger compartments and entry/exit points. Don't miss a single thing with powerful zoom and six different dewarping modes. Automatic IR mode provides seamless transition from day to night while true Wide Dynamic Range (WDR) significantly improves images during challenging lighting conditions.



#### Railhead Exclusives:



The most advanced H.265 compression on the market reduces bandwidth up to 90% and provides:

- Better live viewing
- Less storage constraints
- Faster downloads



Auto-Connect and Configure saves countless hours of installation labor and allows for trouble free maintenance without calling the IT department.



Six video de-warping modes available for viewing while safeguarding a courtroom-worthy original watermarked file.



Split screen and panoramic viewing modes.



Configurable Options:

- Selectable H.264 or H.265 video compression rate
- Selectable on or off operation of the built-in Microphone to accommodate each individual installation.



**Railhead**  
SYSTEMS

Railhead Corp.  
224 Shore Court, Burr Ridge, IL 60527  
800-235-1782 708-844-5500  
[www.railheadcorp.com](http://www.railheadcorp.com)

# 360 Degree Camera



## RVS-CAM-3605MP-2M

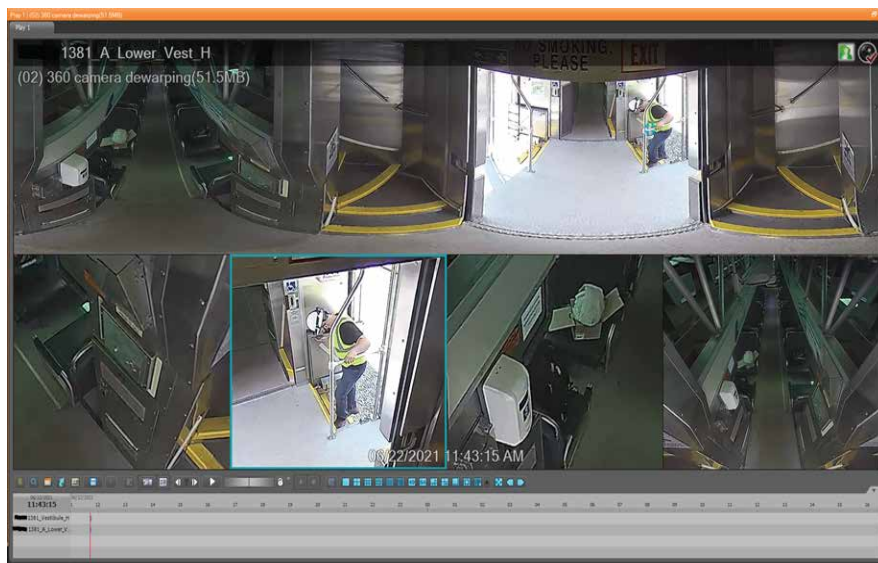


### Features and Capabilities:

- Allows for fewer cameras while maximizing coverage reducing installation and maintenance costs
- Superior de-warped images - original image retained
- Split screens and panoramic viewing modes
- Full 5 megapixel / 2560 X 1920 resolution
- Hidden IR illumination for surveillance in complete darkness
- Positive locking M12 rail connectors
- Selectable H.264/H.265 compression
- IP67 and IK10 rated for a rail environment
- NDAA 889 Compliant

### Applications

- **Locomotive cab** - The 360° camera is perfect for the challenging lighting conditions and viewing angles of the cab. While only running a single NFPA 130 Cat 5e cable, the ultra-wide viewing angle and ePTZ (electronic pan tilt zoom) capability eliminates all blind spots in the cab. Multiple de-warping modes are available for easy viewing while maintaining the original file for authenticity and chain of custody.



360-Degree camera dewarped image

- **Passenger area** - Save on installation with fewer cameras and cable runs while maximizing coverage particularly useful near stairways.
- **Entry and exit points** - Complete coverage with one low-profile camera that properly manages the rapidly changing lighting conditions of opened and closed doors.



**Railhead**  
SYSTEMS

Railhead Corp.  
224 Shore Court, Burr Ridge, IL 60527  
800-235-1782 708-844-5500  
[www.railheadcorp.com](http://www.railheadcorp.com)

# 360 Degree Camera



## RVS-CAM-3605MP-2M

### Product Specifications:

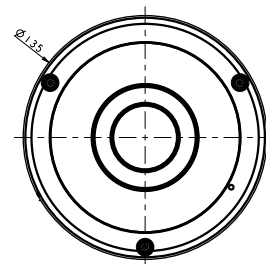
#### Audio/Video

Image Sensor	1/1.8" CMOS
Max. Resolution	2560 x 2048p
Lens Type	Fixed-focal
Focal Length	1.5mm
Field of View	180°(H), 180°(V), 180°(D)
Min. Illumination	Color : 0.15 lux @ F1.8 B/W : 0 lux (IR LED ON)
Dynamic Range	120dB (True WDR)
Day and Night	IR cut filter with auto detection
IR Distance (LEDs)	20m / 65.6ft (4ea)
Video Compression	H.265, H.264, M-JPEG
Max. Frame Rate	30ips at 2560 x 2048p
Video Streams	Individually configureable, High Quality, Long-Term and Remote streams
Multi-view Images	Up to 6 dewarped view areas and full 360° view simultaneously
Security	TLS Encryption, Multi-user Authority, IEEE 802.1x IP Filtering
Audio	Built in Microphone (with on/off selectability)

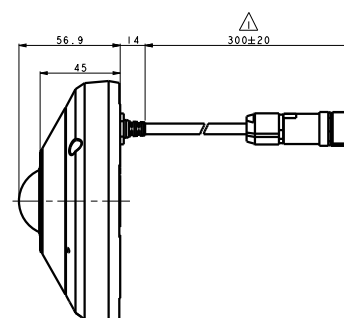
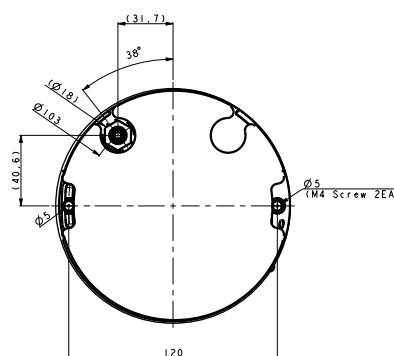
#### Environmental

Vandal Resistance	IK10
Ingress Protection	IP67
Operating Temperature	-30°C ~ 50°C
Operating Humidity	0% ~ 90%
Power	PoE Max. 11W peak
Dimensions	5.31" x 2.24" (135mm x 56.9mm)
Weight	1.48lbs (0.67kg)
Approvals	FCC, CE, MIL-STD-810G, NDAA 889, EN50155

TOP VIEW



BOTTOM VIEW



(measurements in millimeters)

Covered by one or more claims of the patents listed at [patentlist.accessadvance.com](http://patentlist.accessadvance.com)



**Railhead**  
SYSTEMS

Railhead Corp.  
224 Shore Court, Burr Ridge, IL 60527  
800-235-1782 708-844-5500  
[www.railheadcorp.com](http://www.railheadcorp.com)