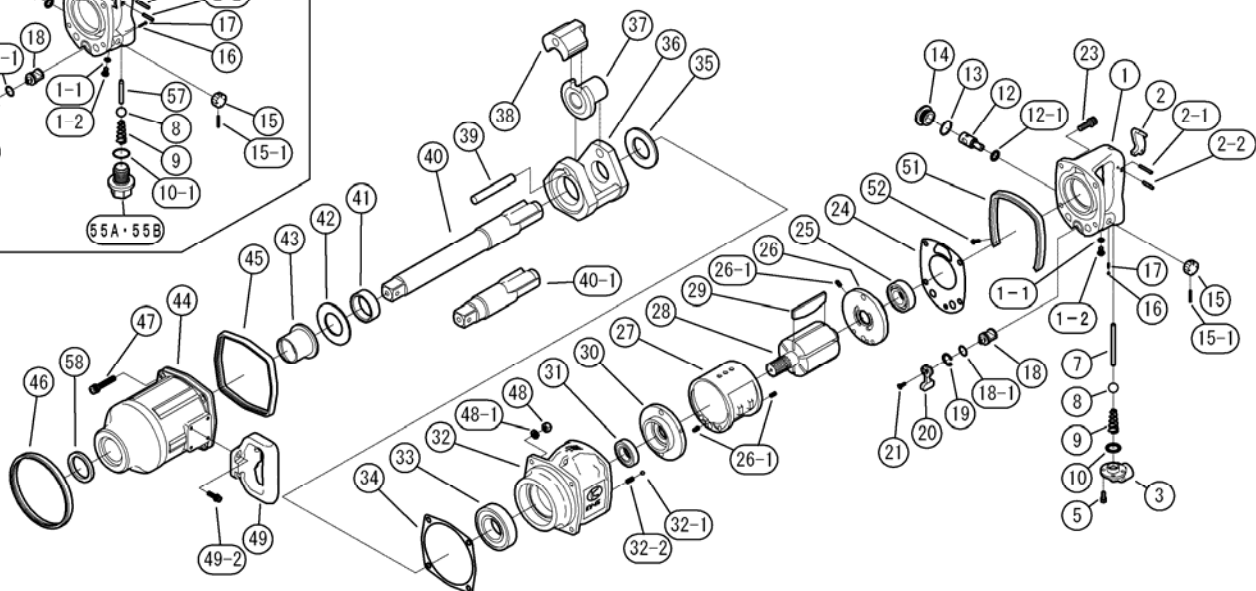
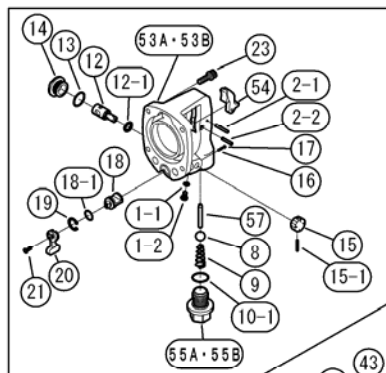


2504B / 2505

EXPLODED VIEW



REF.NO.	PART NO.	PART NAME	Q'TY	REF.NO.	PART NO.	PART NAME	Q'TY
1-1	M6X8	SCREW	1	32-2	0132991	KNOCK SPRING	1
1-2	P-6	O-RING	1	33	6208ZZ	BALL BEARING	1
2-1	G4X28	PIN	1	34	45207	IMPACT GASKET	1
2-2	G4X22	PIN	1	35	42025	SPACER	1
8	5/8ID	THROTTLE VALVE BALL	1	36	42026B	IMPACT CAGE	1
9	0132190	THROTTLE SPRING	1	37	42027	CAM	1
12	0446017	REGULATING VALVE	1	38	42028	HAMMER	1
12-1	P-14	O-RING	1	39	42019	HAMMER PIN	1
13	S-26	O-RING	1	40	42030-1	9" EXT. SQ.DR.ANVIL	1
14	04460391	PLUG	1	40-1	42030	SQ.DR.ANVIL (G) short	1
15	0442314	REGULATING VALVE KNOB	1	41	42031	CAGE BUSHING	1
15-1	SPX322	PIN	1	42	42034	THRUST PLATE	1
16	14193	KNOCK SPRING	1	43	32132	SPINDLE BUSHING	1
17	4D	STEEL BALL	1	44	42082B	IMPACT HOUSING CP	1
18	0142015B	REVERSE VALVE	1	45	42071	REAR RUBBER PROTECTOR	1
18-1	S-18	O-RING	1	46	45270	FRONT RUBBER PROTECTOR	1
19	Z03121	RETAINER RING	1	47	M8X45	BOLT	4
20	0132915	REVERSE LEVER	1	48	Z0918	LOCK NUT	4
21	M4X12	SCREW	1	48-1	M8W	WASHER	4
23	M8X25	BOLT	4	49	32104	D HANDLE	1
24	45206	MOTOR GASKET	1	49-2	M6X20	BOLT	4
25	6205ZZ	REAR BALL BEARING	1	51	0142041BH	RUBBER PROTECTOR	1
26	0132124	REAR END PLATE	1	52	M4X12	SCREW	2
26-1	SP5X10	PIN	3	58	V42556	OIL SEAL	1
27	40509	CYLINDER	1	Parts For Inside Trigger Handle			
28	01420211	ROTOR	1	10-1	P-28J	O-RING	1
29	0140512	ROTOR BLADE	6	53A	0550180bns	HANDLE C.P.(NPT)	1
30	0132124	FRONT END PLATE	1	54	0345417	THROTTLE LEVER	1
31	6205ZZ	BALL BEARING	1	55A	0132919mis	INLET BUSHING(NPT)	1
32	42081CH	MOTOR CASE C.P.	1	57	0550113bt	THROTTLE VALVE PIN	1
32-1	6D	STEEL BALL	1				



224 Shore Court, Burr Ridge IL 60527
800-235-1782 Fax 708-844-5559

www.railheadcorp.com